

NGATIWAI.IWI.NZ



NGĀTIWAI TRUST BOARD

Hui-A-Iwi

Otetao Reti Marae, Saturday 4th March 2017

Content:

1. Agenda	Page 2
2. Communications	Page 3-4
3. Database	Page 5
4. Education	Page 6-8
5. Finance	Page 9-10
6. Resource Management	Page 11-15
7. Treaty Claims	Page 16-17
8. Notes	Page 18-22

1. Agenda

Time	Kaupapa
8.:30am	Powhiri
9:00am	Kapu Ti
9:30am	Chairman briefing and review of last quarter (feedback/discussion)
10:30am	Workshop session <ul style="list-style-type: none">• Takutai Moana Act 20177 – Winston McCarthy• Overlapping Claims
12:00pm	Morning Tea
12:15pm	Workshop session <ul style="list-style-type: none">• PSGE• Way forward
2:15pm	Hui whakamutunga
2:30pm	Hākari

2. Communications

Highlights 1st November 2016 to 31st January 2017:

Waitangi Tribunal Hearings, 1 & 2 December 2016

- Panui published regarding the final 2 days of hearings to be held in Wellington on 1 & 2 December
- Participated in a working committee to arrange the travel and accommodation of 55 of our whanau who traveled to Wellington to sit in on the hearings
- The final 2 days of hearings were live streamed by the tribunal and made available for whanau to watch in our Board room on the big screen

AGM – Toll Stadium, 17th December 2016

- Successful AGM
- Annual report and AGM minutes made available on NTB website

Elections of Trustees

- Panui published advising of the Nomination process, Election Timelines, regular reminders encouraging whanau to participate and the final results of the elections.

Treaty Settlement update

- January seen a detailed Treaty Settlement update produced to ensure whanau are informed with all the Treaty matters that the Board are working through at this time, particularly around the current status of our treaty settlement and overlapping claims of other hapū/iwi in our rohe
- Update included in Te Tūkaiāia which was mailed out to kaumātua recognising many do not go on the internet

NTB Mandate Maintenance report to Office of Treaty Settlements

- Assisted Treaty Claims manager with completing the report for 1 Nov – 31 Jan 2017
- Report required on a quarterly basis on NTB mandate detailing all panui, correspondence, hui and any other documents relating to the mandate

Communication Activities:

Monthly Te Tūkaiāia Newsletters

- Combined November/December edition & a January edition published
- Included the year in review by Haydn Edmonds in December, detailed Treaty Settlement update, Trustee election results and new CEO announcement in January
- Tūkaiāia sent to kaumātua by mail and emailed out to our members
- Monthly Board Meeting Summaries
- November, December and January summaries made available to whanau on our website and in Te Tūkaiāia
- Other Panui
- CEO vacancy and announcement of Kris MacDonald as new CEO
- Whangaruru School cultural day
- Ngātiwai Education – Te Au Here O Tūkaiāia Rau Ora series of wananga
- Regular panui encouraging members to register with NTB or update their details

- Public warning from MPI advising whanau of a Shell fish bio toxin alert
- Correspondence from E-mails, Website and Facebook
- Liased with relevant managers to provide responses Media
- Article in the Northern Advocate regarding the final 2 days of hearings for the Waitangi Tribunal's enquiry in the NTB mandate.
- Media release regarding the appointment of Kris MacDonald as the Board's new CEO.

Barry Caldwell

Communication Advisor

3. Database

Review, refine and maintain the current database

Regular address updates and new registrations continue to be promoted and received.

- The percentage of registered members who are recorded as without a known postal or as gone-no-address (GNA) is 14.5%.
- The total number of registered members as at 31st January 2017 is 7555 with 38 pending approval. This is an increase of 181 registered members during the quarter.

Efforts made to increase registered members and update addresses:

- Panui to register as a member of Ngātiwai Trust Board are regularly placed on the NTB website, face-book pages and Te Tūkaiāia newsletter. Registrations forms are available at the office or on-line.

Efforts made to reduce registered members GNA's:

- Panui for members to update their contact details are regularly included on the NTB website, face-book pages and Te Tūkaiāia newsletter. Update forms are available at the NTB office or on-line.

Contact to register or update:

- Toni-Marie Sweeney on 09 430 0939 or email: tsweeney@ngatiwai.iwi.nz

Moana MacDonald

Board Secretary/Database Manager

4. Education

Staff – March 2017	
Kaumātua	Nupere Ngawaka
Manager	Angeline Waetford
Ngātiwai Education Manager	Gayle Dowsett
Administration Manager	Natalie Heka
Contract Manager	Petina Stone
Te Matarau	Liz Flower
IMER Education Support	Rodney Ngawaka, Hohi Riihi, Debbie Graham, Honey Isaac-Paora, Agnes Pene, Katya-Rose Timu, Meiteria Wellington
Nga Tau Miharo/Incredible Years	Lisa Riini, HOhi Riini, Cassie Munson, Leila Amos
Kokiritia te Ora	Liz Flower

IMER 2016 – 2018

- We are part way through a contract for the time period above over 18 months. We will be supporting 20 mokopuna into early childhood education, 70 tamariki to reach an achieved level at National Standards or Nga Whanakitanga, 60 taitamariki in schools to achieve NCEA level 2 and 30 young people in the community to reach NCEA level 2 or equivalent. To do this we will be supporting them to pathway into courses or back into school to reach this target. If they go into the workplace, this will be considered success also.
- IMER – Iwi Ministry Education Relationships
- For this we are contracted to work with whanau and tamariki, taitamariki in the areas of
- Early Childhood, National Standards & NCEA Level 2

Kokiritia te Ora – HRC Research - resilience against youth suicide 2016 – 2018

- Research contract run by the Ngātiwai Trust Board employing Liz Flower as administrator. This contract is concluding this year with three weekend noho left and the final report to be written by January 2017. Please note that the final report for He Ara Toiora, the research project preceding this, has been written and submitted for publication. Ring the education office if you would like a copy.

Nga Tau Miharo, - 2017

- Positive parenting programmes of which three are beginning this month. There are still spaces on this FREE course, with travel expenses paid and all materials supplied. It is a very popular parenting course and some participants enroll for a second time to consolidate their positive parenting.
- Many say the difference in their family wairua is worth every week of the programme. Call the Education office if you are interested in signing up. 2 programmes in Ngunguru and 1 in Tikipunga. There will also be a programme starting later in the year.

Kamo High School Iwi/School partnership, 2017

- This contract is yet to be finalized and will be similar to last year, where the school and Ngātiwai Education have an agreement for Iwi support and involvement to enhance learning and pastoral care of Māori students who request this, or are identified as needing support. Last year we also carried on with a putaiao support programme where Rodney added value in kaitiakitanga and te Ao Māori world view into the science programme.

Te Matarau 2016

- Pastoral care for Northtec students in Kaitaia. This is the third year that we have been contracted to offer pastoral care to Northtec Māori or Pacifica students through te Matarau. Liz Flower has built a reputation of carrying out this job at a very high standard and will continue this excellent mahi in 2017 here in the Whangarei campus.

SELO – Te reo support in Early Learning centers 2016/2017

- Extremely well received in the centres, this contract has been successful last year and this, and we are hoping it will be extended. The centre mahi is executed by Hohi and Honey and they love having our beautiful wahine coming in and encouraging the use of te reo.

TPK - Support for Whangaruru Youth through Wananga

- Petina and her team have made a huge impact in Whangaruru and apart from the wonderful manaaki, the whakawhanaunga and the excitement of being in the midst of sports people at the top of their field, the youth in Whangaruru have gained refereeing experience and qualifications in the area of Touch Rugby. A model of wananga that we would like to run in other areas of Ngātiwai if we can raise the funds required.

Kaumātua me Kuia o Ngātiwai kei te ra

- A highlight of our week, these sessions are organized by Liz Flower and run by Kaumātua and Kuia sharing matauranga Ngātiwai with each other. Ngātiwai reo, waiata and education activities are planned and all are welcome to attend. We all join together for a shared lunch.
- Liz reminds regular participants each week by phone, so let her know if you would like to get that reminder phone call. She also regularly updates news about kaumātua day on facebook.
- The exciting prospect of travelling to Wellington in June to perform at the annual Kaumātua Kapa Haka Festival is in our sights. Watch this space!!!!!!

Private Training Entity

- We are very proud to let the Iwi know that we underwent our first review from the body that has licensed our PTE. This is a detailed scrutiny of our systems and a rigorous look at our record keeping and capacity to provide education of a standard that is acceptable to maintain registration. We have our final report and it says we are confident in educational performance and confident in capability in self-assessment.

- These are the two measurable outcomes. There are a few suggestions for improvement which we are very happy to comply with. The review has given us a Category 2 rating which we are very pleased to accept, and will strive for category 1 in four years when our next review is scheduled.

Gayle Dowsett

Manager Education Unit

5. Finance

A quarterly overview to 31st January 2017

Treaty Settlement Funding

- Office of Treaty Settlement (OTS) funding contribution of \$150,000 received to assist with legal and ancillary cost associates with Waitangi Tribunal Hearings Process.
- Further contribution towards these costs (i.e. \$113,408) is being requested from OTS.
- Costs associated with overlapping claims to date of \$25,633 is also being requested from OTS.
- Trust Board operational costs of \$229,716 was not covered by the funding received by OTS.
- All Tribunal Hearings costs have been monitored closely and spending criteria adhered to as per OTS requirements.
- All financial reporting requirements have been prepared and submitted as per OTS requirements.

Office of Treaty Settlements Funding Breakdown	Funding Received	Actual Costs	Funding Shortfall
Urgent Hearings - Legal & Ancillary Costs	150,000	263,408	(113,408)
Overlapping Claims – Specialist Advice & Ancillary Costs	-	25,633	(25,633)
Ngātiwai Trust Board Operational Costs	-	229,716	(229,716)
Total OTS Funding to 31 January 2017	<u>150,000</u>	<u>518,757</u>	<u>(368,757)</u>

Quarterly Financial Review

- Consolidated quarterly trading results tracked behind budget with a net loss of \$85,796, mainly due to unexpected costs relating to the Tribunal Hearings process held in Wellington as well as the April Quota Lease Income which was previously over budgeted for and which will correctly align with the actual income being received during April 2017.
- Positive trading results with Bland Bay Camp Ground incurred a quarterly net profit of \$72,939, a marked improvement on budget being \$44,676.

- The camp ground is well on track to incur a net profit for the 2017 financial year end. Bland Bay was thus able to repay \$80,000 of its loan to the Trust Board, a pleasing result.
- The Education unit has continued to secure numerous contracts with the year to date results tracking well against budget.

Investments tracked positively, with quarterly income/profit distributions as follows:

Rathbone James Limited Partnership – Westpac Building (75% share)	\$101,801
42 Port Road Limited Partnership – Warehouse (36.5789% share)	\$69,701
James Street Car Park Limited – Leased Car Parks (50% share)	\$2,906
TOTAL PROFIT SHARE ON PROPERTY INVESTMENTS	<u>\$174,408</u>

Angela Gill
Acting Chief Financial Officer

6. Resource Management

- 01/02/17 – Lichen Monitoring engagement with Refining NZ



Since late last year the RMU had undertaken consultation with Refining NZ regarding the Lichen (Moss found on Rocks) monitoring process whereby Lichens are photographed, identified by species, sampled and then tested in laboratories by scientists

from specific sites of the surrounding Maunga and other areas in Whangarei Heads.

The reason for carrying out this monitoring is to measure whether the fumes exhausted into the air from the Oil Refinery at Marsden Point are having any adverse effects on the surrounding ecosystem, which will in-turn assist the

Whangarei District Council of determining whether they need to change their policies on permitted air emissions or not.



As a matter of interest we'd discovered that this monitoring is carried out bi-annually by specific scientists and was initiated back in 1976. Furthermore during the operation, we'd obtained vital information regarding the actual monitoring methodology and ways in which they're being implemented.



As per our normal engagement protocols, the RMU were present to carry out cultural monitoring at some of the sites which included Mt Manaia, Reotahi (Mt Aubrey), Matariki (Mt Lion), Taurikura and Kauri Mountain.

Once the final report has been produced by the scientists, we will receive a copy of it to assess further and keep on file so if the board so requests, the information will be readily available.

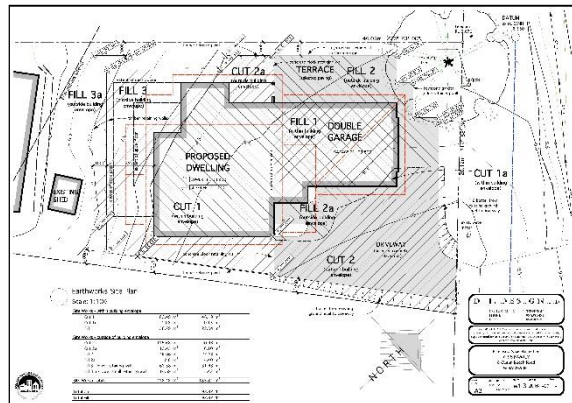
- **07/02/17 – Property Development – Site visits/meetings**

Since we're still in the hot summer season which tends to be also known as the "Building Development Season", we've had a substantial number of WDC and NRC Resource Consent Applications and also DOC Permits and Concessions coming in over the past few weeks requesting Iwi consultation for cultural sensitivity purposes whereby we've been frantically busy attending to all.

Please see the below list and some small detail pertaining to these developments:

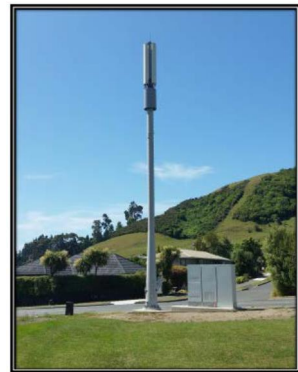
- **Kiss development at Urquharts Bay, Whangarei Heads**

- New dwelling – Family home
- Area known to Ngātiwai RMU and Heritage NZ for archaeological sites
- All relevant information and documentation received by 07/02/17
- Site visit/meeting carried out with applicants 07/02/17
- Iwi engagement acceptance received 09/02/17
- Ngātiwai CIA (Cultural Impact Assessment) issued 09/02/17
- Cultural monitoring during earthworks – Pending



- **Helena Bay Holdings Ltd development at Helena Bay, Whangaruru**

- Installation of a Cellular Antenna
- Area known to Ngātiwai RMU and Heritage NZ for archaeological sites
- All relevant information and documentation received by 08/02/17
- Site visit/meeting carried out with applicants – Pending
- Iwi engagement acceptance received 08/02/17
- Ngātiwai CIA – Pending
- Cultural monitoring during earthworks – Pending



- **McNeil development at Whangaiti Bay, Whananaki**

- Seawall/Rockwall renewal including access ramp over public reserve
- Area known to Ngātiwai RMU and Heritage NZ for archaeological sites
- Site visit/meeting carried out with agent (Reyburn & Bryant) 15/02/17
- Discovered that consultation is retrospective (Applicant completed works already)

- *Further information required from WDC, NRC and DOC – Pending*
- *Further engagement to be recommended – Pending*



○ ***Vinson development at McGregors Bay, Whangarei Heads***

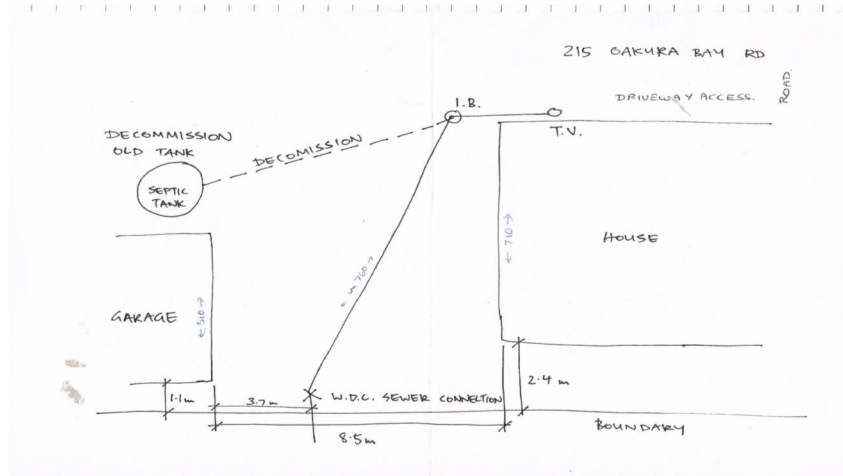
- *2 lot subdivision including a New dwelling – Family home*
- *Area known to Ngātiwai RMU and Heritage NZ for archaeological sites*
- *All relevant information and documentation received by 02/02/17*
- *Site visit/meeting carried out with applicants 15/02/17*
- *Iwi engagement acceptance received 15/02/17*
- *Ngātiwai CIA – Pending*
- *Cultural monitoring during earthworks – Pending*



○ ***Martin development at Oakura Bay, Whangaruru***

- *Remove existing effluent system and connect to WDC pipeline*
- *Area known to Ngātiwai RMU and Heritage NZ for archaeological sites*
- *All relevant information and documentation received by 14/02/17*
- *Site visit/meeting carried out with contractor 17/02/17*
- *Iwi engagement acceptance received 17/02/17*
- *Ngātiwai CIA – Previously developed so not required*

- *Cultural monitoring during earthworks – Pending*



○ *And the list continues.....*

- **16/02/17 – Russell State Forest update – Working Group Hui 3 & 4**



Department of Conservation
Te Papa Atawhai

Following on from previous reports the RSF Working Group have undertaken another 2 Hui as we endeavour to move forward with developing the 20yr health plan.

The first of these Hui was held 27/01/17 whereby we'd discussed condensing the detail of the plan into a more compact format for presentation purposes as there are understandably further consultation Hui with whanau, hapū & marae to be held regarding the actual plan, proposed tools and implementation methods.

There was also mention of including involvement or further consultation from other key groups like:

- Other hapū/marae whom haven't yet attended any Hui
- The "Oyster Farming" and other businesses of the areas surrounding the RSF
- Other Stakeholders Eg. NRC, WDC, Landcare groups, etc.



It was also decided that certain members would continue working on the plan and also some would formalise a draft Communication strategy to present at the next Hui for discussion.

At the second Hui 16/02/17 the less detailed/condensed presentation and Communication strategy were reviewed whereby additions were submitted, small alterations were made and agreed upon. In the meantime those specific members of the group will continue to develop and finalise those documents and remain in contact with the wider group via email etc.

We'd also discussed the potential effects of the outer regions of the RSF being the privately owned land blocks and risks involved if they're not engaged for trapping also. At this point we'd informed the group that we've already been developing the "TOONN" pest control management plan and undertaking consultation with the relevant parties to address this issue from the Whangaruru side which in-turn would coincide with the RSF plan.



Our **next Hui will be held 09/03/2017** and is intended to formalise engagement with the other key Stakeholders as previously mentioned above. The venue is yet to be confirmed.

Following that the RSF Working Group will then be holding the first of its Hapū/Marae consultation Hui on Saturday 18/03/2017 at Te Rawhiti Marae so please feel free to attend if you're available.

Dane Karapu
Resource Management Unit

7. Treaty Claims

Issues Arising:

1. Terms of Negotiation and Urgent Hearings

- Completion of Terms of Negotiations are paused pending the outcome of the Ngātiwai Mandate Inquiry by the Waitangi Tribunal.
- Urgent Hearings closing submissions were due to the Waitangi Tribunal on 23rd December 2016 although the Tribunal accepted late filing of closing submissions up until 3 February 2017. Two claimant groups did not file closing submissions.
- The Board now awaits a report on the Tribunal's findings and any recommendations.

2. Overlapping Claims with other Iwi / Large Natural Groupings

- The Board received and/or responded to a number of overlapping claims matters including redress that has been offered to the following groups by the Crown:
 - Ngati Rehua – Ngāti Wai ki Aotea
 - Marutūahu collective joint settlement
 - Marutūahu collective individual Iwi settlements for:
 - Ngaati Whanaunga,
 - Ngati Maru,
 - Ngati Tamatera and
 - Te Patukirikiri
 - Hako - concerning their statement of association
 - Hauraki collective individual Iwi settlements for:
 - Hako,
 - Ngai Tai ki Tamaki,
 - Ngati Hei,
 - Ngati Maru,
 - Ngati Paoa,
 - Ngati Porau ki Hauraki,
 - Ngati Pukenga,
 - Ngati Rahiri Tumutumu,
 - Ngati Tamatera,
 - Ngati Tara Tokanui,
 - Ngaati Whanaunga and
 - Te Patukirikiri concerning –
 - proposed protocol area map for the Taonga Tuturu and Primary Industries protocols and
 - proposed area over which the Hauraki collective fisheries quota RFR applies

- The Minister made final decisions concerning Ngati Rehua-Ngātiwai ki Aotea and Marutūahu individual Iwi settlements during the period to which the Board objected.
- The Board is awaiting confirmation of hui with the Hauraki collective and Hako to discuss overlapping claims and redress proposals before submitting its views on these matter to the Crown in writing.

Communications and Engagement with Ngatiwai Whanui:

1. Open Door Policy and Face to Face Engagement Hui

Progress on this objective has been maintained despite the diversion of focused effort to the Ngātiwai Mandate Inquiry and work on overlapping claims (as outlined above).

2. Monthly Board Updates and Newsletters

A combined November/December and a January newsletter containing monthly Board meeting summaries were produced by the Board during the period.

These newsletters and Board meeting summaries were also posted to our facebook page and mailed to Kaumātua on our distribution list.

3. Trust Deed Review

The review group provided a report to the Board on 18 November 2016 which was discussed by the Board at its regular monthly meeting on 16 December 2016.

4. Wananga Planning for PSGE

At this point the wananga is to be held-off until the Waitangi Tribunal reports on its findings and any recommendations resulting from the Ngātiwai Mandate Inquiry. In the meanwhile Hui a iwi will continue to workshop PSGE representative options.

5. Quarterly Hui-a-Iwi

The AGM was held on 17 December 2016 at Toll Stadium. The Annual Report was posted to our face-book page and website and made available at the AGM and at the Boards office.

6. Finalise the Strategic Communications Plan

The plan has been completed and is available on our website for public view.

Tania McPherson
Treaty Claims Manager

8. Notes
