

NGĀTIWAI

KI TE HOE

HUI Ā TAU

O TE POARI O NGĀTIWAI

SATURDAY 27 NOVEMBER



Karakia and Mihi

- Apologies
- Confirmation of Minutes and Matters Arising
- Iwi Operations
- Strategic
- Commercial
- Financials
- Annual Report for year ended 31 March 2021
- General Business

Closing Karakia



IWI OPERATIONS REPORT

2021



NGĀTIWA/
KI TE HOE

KŌWHITI-19

2020 / 2021 RESPONSE



NGĀTIWA/
KI TE HOE

WHIRIA TE MUKA

IWI CO-LAB CELEBRATION



NGĀTIWAI/
KI TE HOE

TE WAKA REO O NGĀTIWAI AND KAUMĀTUA KAPA HAKA



TAURANGA KŌTUKU RERENGA TAHI





MOTIVATED & MOVING FORWARD TOGETHER

TRUSTEE WANANGA



HUI Ā MARAMA BACK ON THE MARAE



NGĀTIWA/
KI TE HOE

OVERLAPPING CLAIMS & MACA



NGĀTIWA/
KI TE HOE

2020 AGM AT MŌKAU MARAE



STRATEGIC UPDATE

2021



‘Kia Korikori ngā Tōtōrōre o Manaia Tūranga Rau’

‘To Strengthen the Wellbeing and Prosperity of Ngātiwai’

*Ngātiwai
Manawa Tuatini*

Ngātiwai Fearless
and Dynamic

*Ngātiwai
Manawa Topu*

Ngātiwai United

*Ngātiwai
Manawa Taurikura*

Ngātiwai Thriving



Te Reo me ngā Tikanga - Ngātiwai

Te Tai Ao - Environmental
Te Hauora - Wellbeing
Te Mātauranga - Education
Te Rangatiratanga - Advancing our Rights



Te Tahua Pūtea – Commercial

Adopt an Investment Criteria which reflects the values and ethics of Ngātiwai Iwi

Diversify our investment portfolio

Build commercial capacity and capability of Ngātiwai uri

Identify joint venture partnerships with entities whose values align with Ngātiwai iwi

Implement a Future Directors Program

Look for business opportunities that we can 'actively manage'

Te Tai Ao - Environmental

Revise the Ngātiwai Iwi Hapū Environmental Management Plan

Develop a Mana Whakahono a Rohe Agreement for Te Ākauroa o Ngātiwai

Complete a Biological Audit of Ngātiwai rohe/whenua/moana/waterways.

Grow internal kaitiaki capacity and capability to provide Te Tai Ao services across Te Ākauroa o Ngātiwai

Strengthen relationships with Ngātiwai whānau, hapū and kāinga on Tai Ao matters

Advocate and advance the interests of Ngātiwai Iwi with the Crown and Local Government

Develop Te Tai Ao programs that reflect local priorities



Te Hauora - Wellbeing

Review of services being delivered into Te Ākauroa o Ngātiwai

In partnership with Ri a Ora Ngātiwai develop a Hauora Strategy for Te Iwi o Ngātiwai

Enduring relationships with government, community and Māori providers

Advocacy for quality delivery of services into Te Ākauroa o Ngātiwai

Advance Ngātiwai iwi hauora concerns regionally and nationally

Te Mātauranga - Education

Revise the Ngātiwai Education Strategy

Utilise Ngātiwai Education as a hub for quality education services which enhance learning outcomes for ākonga living in Te Ākauroa o Ngātiwai

Utilise Ngātiwai Education (PTE) and other tertiary providers to support vocational, and higher education aspirations of Ngātiwai uri

Develop content to support localised curriculum which honours Ngātiwai heritage and korero tuku iho

Strengthen relationships with schools, early childhood and kohanga reo in te rohe o Te Ākauroa o Ngātiwai



Te Rangatiratanga – Advancing our Rights

Mana Whenua, Mana Moana, Mana Tangata – By Ngātiwai, For Ngātiwai

Uphold WAI 262 as a tūāpapa claim for Te Iwi o Ngātiwai

Ngātiwai did not cede sovereignty as affirmed by the Waitangi Tribunal Stage One and Ngāpuhi Speaks Reports

Restructure the governance of Ngātiwai Trust Board as per the recommendations of the Waitangi Tribunal Report

Grow tribal understanding of He Whakaputanga me Te Tiriti o Waitangi

Advocate and advance Ngātiwai Iwi rights and interests with the Crown, local government and with neighbouring hapū and iwi

Hear whānau, hapū, marae voice

Work with our neighbouring hapū/ iwi to advance our collective issues

No full and final treaty settlements



Te Reo me ngā Tikanga – Ngātiwai

Te Reo me ngā tikanga o Ngātiwai is the cornerstone of our business and needs to be integrated across governance and management

Ongoing delivery of te reo me ōna tikanga programs across Te Ākauroa o Ngātiwai

Development of reo curriculum to support ngā Kōhanga Reo o Mōkau me Takahiwai and Te Puna Ruku Mātauranga o Whangaruru

Advocate and advance Te Reo delivery across the schools of Te Ākauroa o Ngātiwai

Establish a Ngātiwai Mātauranga Archive (physical and digital) to protect and preserve our heritage

He Hui Ahurei o Ngātiwai – celebrating Ngātiwai iwi me ngā uri katoa



COMMERCIAL REPORT

2021



FINANCIAL REPORT

2021



TE TAHUA KURA MĀKOHA O NGĀTIWAI

OUR IWI DISTRIBUTION MODEL 'TE TAHUA KURA MĀKOHA O NGĀTIWAI' TAKES A NGĀTIWAI WORLDVIEW INTO HOW WE WILL GROW, HOUSE AND DISTRIBUTE ASSETS TO URI INTO THE FUTURE. IT REFLECTS ON OUR UNIQUE CULTURAL NARRATIVES REMEMBERING OUR TŪPUNA WHAEA TE KURA MĀKOHA, THE BROTHERS TE RANGIHOKAIA AND TE RANGAPŪ AND THE PĀ OF TŪPUNA MANAIA 'TE REAREA' AT MIMIWHANGATA.



HE TAHUA RANGIHOKAIA FUTURE GENERATIONS

TO BE LIKE RANGIHOKAIA TO
GROW OUR IWI ASSETS INTO THE
FUTURE



HE TAHUA REAREA IWI OPERATIONS

TO PROVIDE A REFRESHED PĀ TO
HOUSE OUR IWI OPERATIONS



HE TAHUA RANGAPŪ DISTRIBUTIONS TO OUR URI

TO PARTNER IN DELIVERING
OUTCOMES FOR OUR URI



COMMERCIAL



IWI OPERATIONS

OUR COMMERCIAL ARM IS SEPARATE FROM OUR IWI OPERATIONS

TE TAHUA KURA MĀKOHA O NGĀTIWAI (\$1.75 MILLION)



HE TAHUA RANGIHOKAIA

FUTURE GENERATIONS

\$1.03 MILLION



HE TAHUA REAREA

IWI OPERATIONS

\$0.58 MILLION



HE TAHUA RANGAPŪ

DISTRIBUTIONS TO OUR URI

\$0.14 MILLION

IN 2021 THIS IS HOW OUR COMMERCIAL PROFITS WERE DISTRIBUTED
IN THE 3 KEY AREAS OF TE TAHUA KURA MĀKOHA O NGĀTIWAI

NGĀTIWAI TRUST BOARD & GROUP

Statement of Comprehensive Revenue and Expense

For the Year Ended 31 March 2021

		Consolidated Group	
	Note	2021 \$	2020 \$
Income			
Revenue - Exchange Transactions	3	3,631,931	3,759,256
Revenue - Non-Exchange Transactions	3	2,693,998	1,558,467
Other Income	3	284,420	1,067,415
Total Income		6,610,349	6,385,138
Expenses			
Employee Remuneration	3	1,410,823	1,571,709
Depreciation and Amortisation	5	272,568	265,284
Other Expenses	3	3,831,353	4,032,647
Total Expenses		5,514,745	5,869,640
Surplus/(Deficit) before Net Financing Costs		1,095,604	515,498
Finance Income - Loans and Receivables	4	44,476	186,493
Finance Costs - Financial Liabilities at Amortised Cost	4	390,753	531,868
Net Finance Costs	4	(346,277)	(345,375)
Share of Equity Accounted Investees Surplus/(Deficit) for the Year	10	268,091	252,389
Surplus/(Deficit) for the Year		1,017,419	422,512

Members of the Governing Body
 Senior Executive Officers

2021 \$	Number of Individuals	2020 \$	Number of Individuals
162,807	19	196,559	18
566,080	6	785,856	7

		Interest Rate		Consolidated Group		Ngātiwai Parent Entity	
Note 6. Cash and Cash Equivalents	Term	2021 %	2020 %	2021 \$	2020 \$	2021 \$	2020 \$
Current Assets							
Bank Balances	On Call	0.50%	0.50%	1,692,398	1,136,465	241,865	445,086
				<u>1,692,398</u>	<u>1,136,465</u>	<u>241,865</u>	<u>445,086</u>
Current Liabilities							
Bank Overdraft used for Cash Management Purposes		6.40%	7.15%	–	(393,573)	–	–
Cash and Cash Equivalents in the Statement of Cash Flows				<u>1,692,398</u>	<u>742,892</u>	<u>241,865</u>	<u>445,086</u>

ANNUAL REPORT

YEAR ENDED 31 MARCH 2021



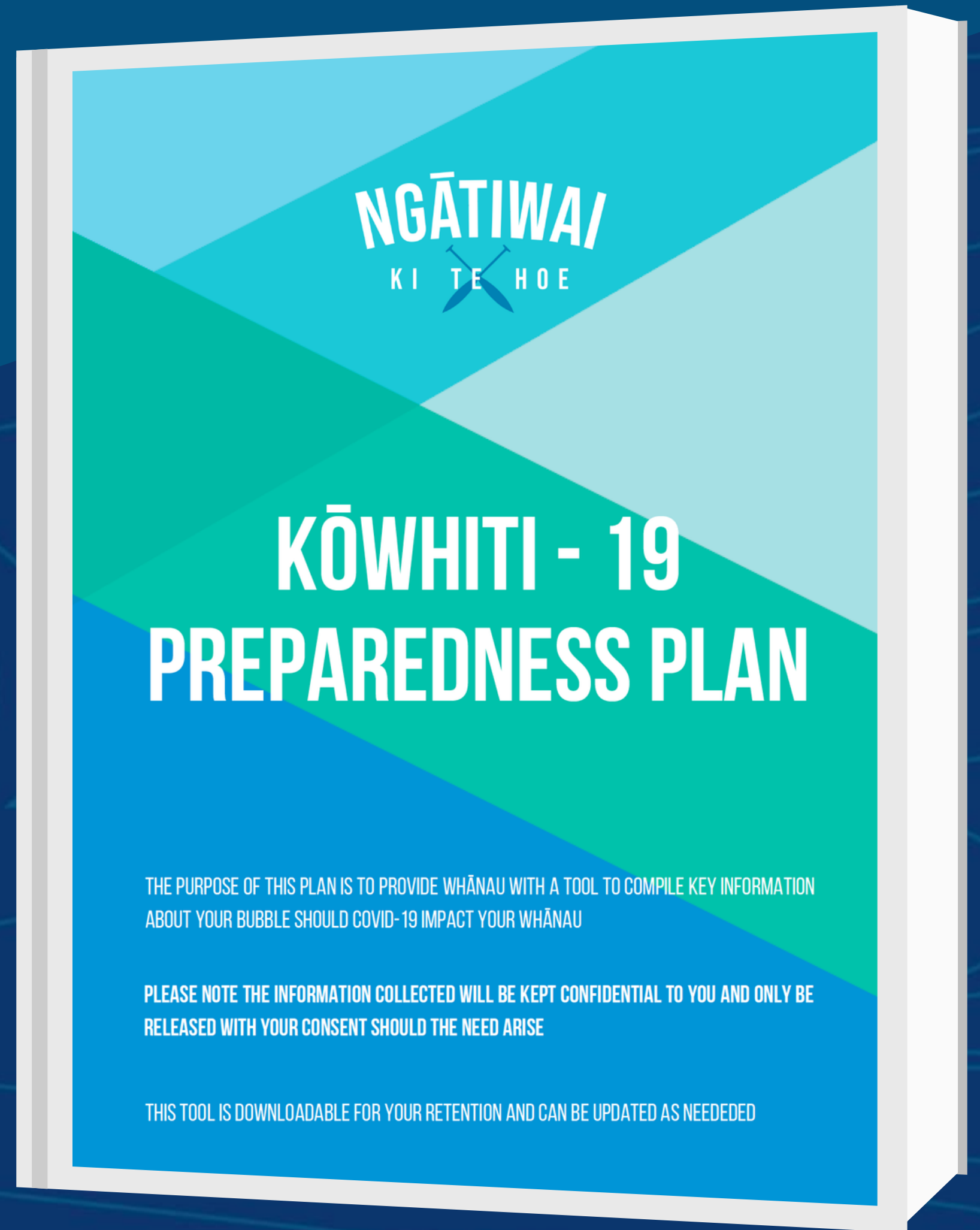
NGĀTIWAI TRUST BOARD
Annual Report 2021

GENERAL BUSINESS





KŌWHITI-19 PREPARDNESS PLAN 2021



THE PURPOSE OF THIS PLAN IS TO PROVIDE WHĀNAU WITH A TOOL TO COMPILE KEY INFORMATION ABOUT YOUR BUBBLE SHOULD COVID-19 IMPACT YOUR WHĀNAU

PLEASE NOTE THE INFORMATION COLLECTED WILL BE KEPT CONFIDENTIAL TO YOU AND ONLY BE RELEASED WITH YOUR CONSENT SHOULD THE NEED ARISE

THIS TOOL IS DOWNLOADABLE FOR YOUR RETENTION AND CAN BE UPDATED AS NEEDED

KŌWHITI-19 PREPARDNESS PLAN

A tool to support whānau, hapū and community to prepare for when covid19 enters your kāinga.

Toolkit compiles key information about your kāinga/ bubble and associates including:

- **Who is in your bubble**
- **Those in your care (children and elders)**
- **Medications**
- **Education and employment**
- **Living conditions, can you isolate at home?**
- **Who will care for your loved ones if you get sick with covid19?**

We will provide copies of the tool kit for whānau, as well as online via our website. It is FREE and available to anyone whanaunga who wants to prepare themselves for when/ if covid19 enters your kāinga.



KŌWHITI-19 RESPONSE FRAMEWORK

Mātauranga – Education

Impact on attendance,
achievement outcomes
Impact of mandates
Schools Based Vaxx Programmes
Truancy follow up
Retraining, new pathways

**Who: MOE, Tertiary Providers,
Schools, Ngātiwai Ed,
NTB Kaimanaaki**

Te Pūmanawa

Planning & Intelligence
Coordination Hub
Decision Making
Outbreak Response
Seek Funding
Pro Active Calling
0800 Iwi Help Line

**Who: Ngātiwai Trust Board,
Hapū, Marae & Community**

Oranga Whānau – Wellbeing

Proactive outreach
Whānau Preparedness
Manaaki support
Our supply chain

**Who: Whānau Ora, Social Service
Agencies, MSD – Te Puni Kokiri,
NTB (Kaimanaaki)**

Wero Ārai Kōwhiti-19 Vaccination Drive

Planning, Coordination
Clinical Support

**Who: DHB, Māori Providers,
Primary Care, NTB, Hapū, Marae,**

Communications

Up to date
Accurate
Connected
From Trusted Sources

**Who: NTB, DHB &
Māori Providers**

Whaioranga Economic Recovery

Business support
Financial assistance
(workplace and whānau level)
Health & Safety/ HR Policies
SME & Whānau Kaimahi

**Who: MBIE, MSD, TPK,
NTB (Kaimanaaki)**

Te Haumarū ā Rohe Protection & Surveillance

Covid testing
Contact tracing
Community Intelligence

**Who: DHB, Māori Providers,
Primary Care, NTB Kaimanaaki**

SIQ - Te Noho Haumarū

‘Supported Isolation Quarantine’
Whānau Preparedness
Clinical Support
Manaakitanga

Who: DHB, Māori Providers, NTB

Border Control

Localised Response
Enforcement/ Education

**Who: NZ Police, Tai Tokerau Border
Control, NTB, Hapū, Marae**





**Puāwai Leuluai'i
Walker (Pou Hāpai)**



**Chanel Randall
(Kaihāpai ki
Whangaruru)**



**Ata Mitchell
(Kaiaarataki)**



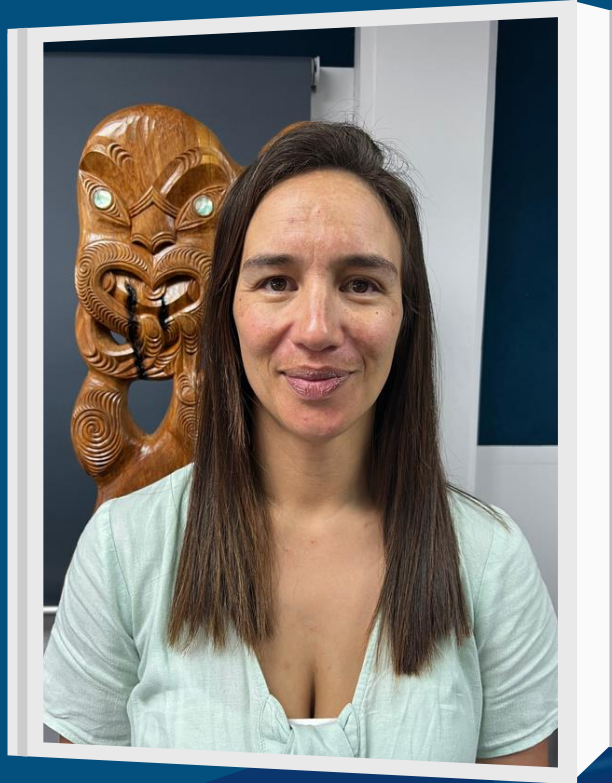
**Meiteria Wellington
(Kaihāpai ki Matapōuri, Tūtūkākā,
Ngunguru)**



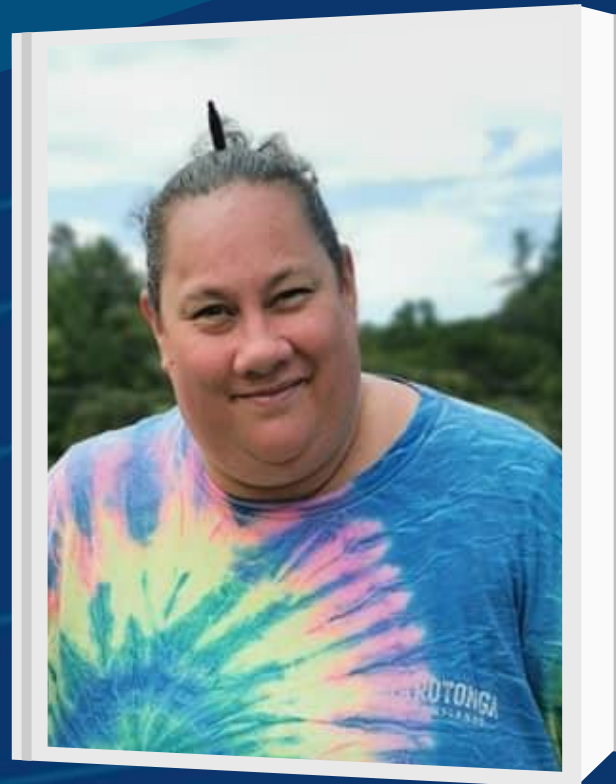
**Paula Wetere
(Kaihāpai ki
Whangaruru)**

Kōtui Hauora

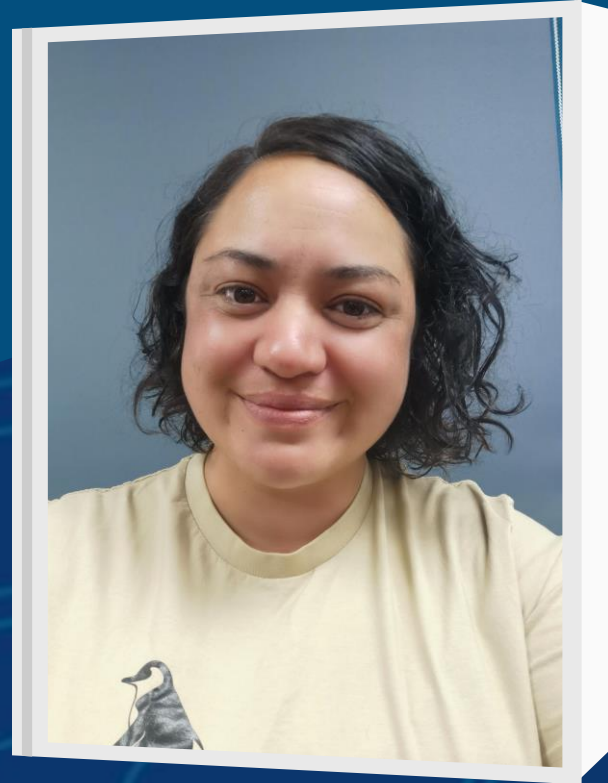
INTRODUCING OUR KAIMANA AKI TEAM



Kea Randall
(Kaihāpai ki Whangārei)



Lisa Riini (Kaihāpai ki
Whananaki)



Huia Busby
(Kaihāpai ki Onerahi –
Pātaua)



Elaine Ngāwaka
(Kaihāpai ki Aotea)



Cherie Williams
(Kaihāpai ki Pākiri)



TERTIARY EDUCATION SCHOLARSHIPS

2021

NGĀTIWAI TRUST BOARD

TERTIARY
EDUCATION
SCHOLARSHIPS

UNDER-GRADUATE SCHOLARSHIPS

RECIPIENTS



- Amy Marino – Bachelor of Social Work (Omaha)
- Andrea Munro – Bachelor of Law LLB (Motairehe)
- Angel Reti – Bachelor of Veterinary science (Otetao)
- Annelise Watene – Graduate Diploma in Project Management (Tuparehuia)
- Michael McCarthy – Bachelor of Law and Commerce and Diploma in Oral Māori Language Fluency (Otetao)
- Chozen Hadfield-Kingi – Bachelor of Arts (Ngaiotonga)
- Eden McCarthy – Bachelor of Health Sciences and Bachelor of Laws – Honour's (Otetao)
- Fabin Flavell – Bachelor of Arts and Bachelor of Laws (Whananaki)
- Jasmine Milton – Bachelor of Law and Bachelor of Arts conjoint degree (Ngunguru)
- Jordan Going-Edwards – Bachelor of Commerce and Bachelor of Laws conjoint degree (Whananaki)
- Kaiwhiri Pita-Gray – Bachelor of Commerce (Ngaiotonga)
- Kezia Naumai – Bachelor Dental Surgery (Ngāiotonga)
- Sara Hona – Te Arareo Māori Level 2 (Omaha)
- Ashleigh Keach – Bachelor of Architecture (Nugunguru)
- Krystal Worters – Bachelor of Education (Huarahi Māori Specialisation) (Whananaki)
- Pere Tamaki – Bachelor of Applied Social Work (Mōkau)
- Rāwinia Wikaira – Bachelor of Science and Arts (Omaha)
- Sharlene Toka – Bachelor of Applied Social Work (Pataua)
- Sharnee Diamond – Bachelor of Oral Health (Ngāiotonga)
- Taiawa Edwards – Bachelor of Commerce and Bachelor of Laws conjoint (Motairehe)
- Taumata Toki – LLB/BMHS – Bachelor of Laws and Medical Health Science (Motairehe)
- Te Ngaio Cleave – Bachelor of commerce Major in Finance, minor in Māori (Motairehe)
- Tina Lumsden – Bachelor of Education Teaching Primary (Takahiwai, Patuharakeke)
- William Hepi – (N.2 Certificate in Te Reo Māori Level 2 (Mōkau)
- Wirihana Croft-Malcolm – Bachelor of Business, Majoring in Marketing with a minor in Psychology (Takahiwai)
- Hirini Edwards – Bachelor of Arts and Commerce (Matatpourī)
- Kealii Leuluai – Bachelor of Applied Management (Mōkau)

POST-GRADUATE SCHOLARSHIP

RECIPIENTS



POST-GRADUATE SCHOLARSHIPS

RECIPIENTS

- **Emma Lynette Hoey – Master of Indigenous Studies (Motairehe)**
- **Korerotia Waetford Williams – Masters in Pasific Island Studies (Whananaki)**
- **Mona-Lisa Wareka – PhD in Anthropology (Mokau)**
- **Ngaroimata Reid – PhD in Management (Matapouri)**
- **Pūawai Lueluai-Walker – Masters in Indigenous Studies (Mokau)**
- **Teina Rihari – Bachelor of Health Science (Honours) in Psychology (Ngunguru)**
- **Kelly Klink – Doctorate of Philosophy (Motairehe)**

FINAL QUESTIONS

